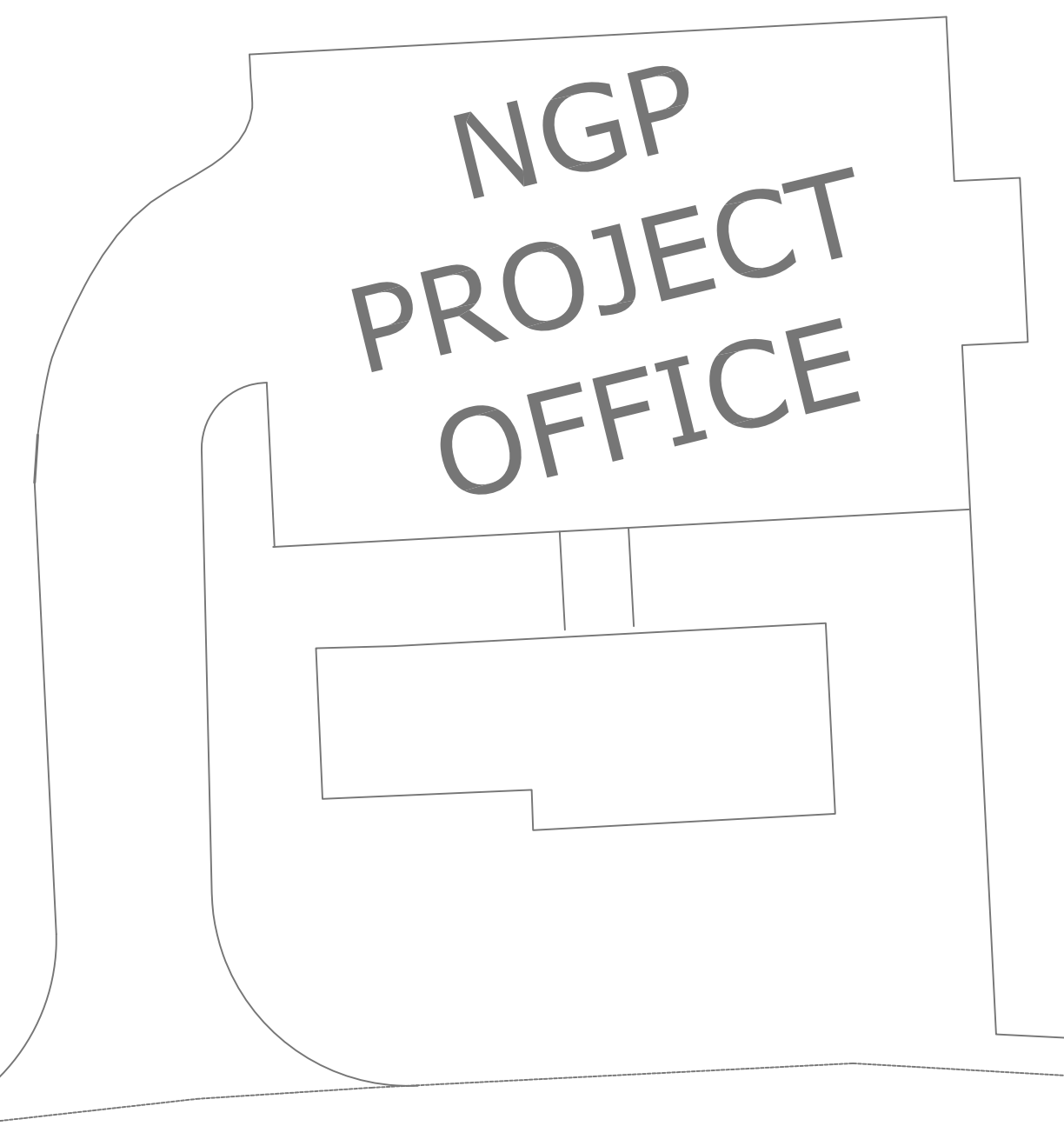
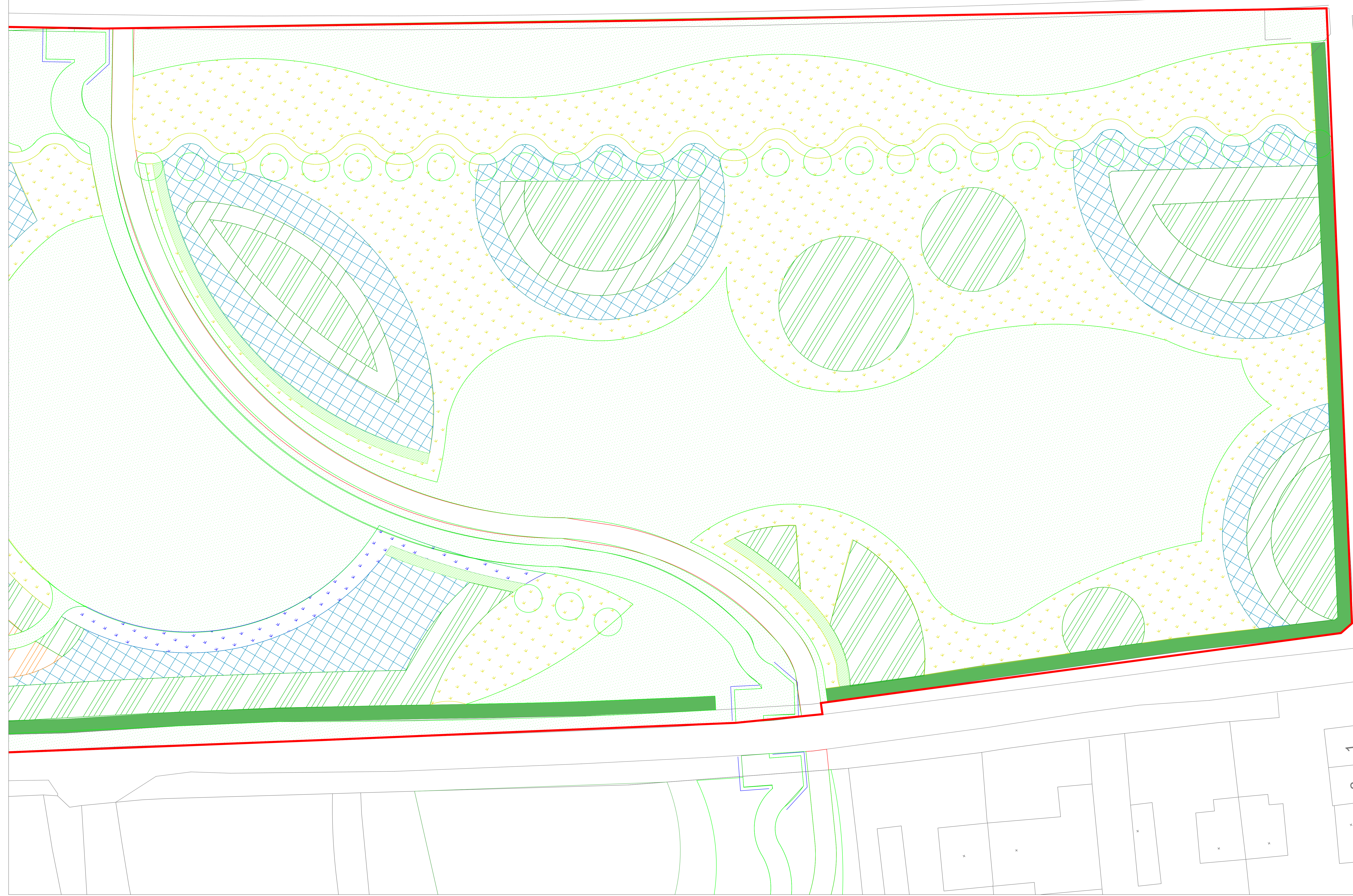


BRIDLE  
FOOTWAY /

GREAT PARK WAY



**LEGEND**

Red Line Boundary.	Woodland Core Mix.	Native Hedge.	Amenity Grass.
Existing Hedgerow to be Retained and Enhanced.	Woodland Edge Mix.	Cinkle Crankle Hedge.	
Existing Hedgerow to be Removed. (33.9m Long)	Birch Walk.	Wildflower Meadow Mix.	
Specimen Trees.	Scrub Mix.	Wildflower Mix Shade Tolerant.	

**Note.**  
To be read in conjunction with drawing 6010-SOS-93-002 & 6010-SOS-93-003

**Robinson Landscape Design**  
The Studio, Hedgeley, North Bank  
Haydon Bridge, Hexham, NE47 6LY  
Tel: 01434 684 100  
info@robinsonlandscapedesign.co.uk

Project Newcastle Great Park Cell LC1	Scale of A0: 1:200	Rev 1 Date Checked
Drawing Name Planting Plan 2 of 2	Scale of A0: 1:200	Rev 2 Date Checked
Drawing No: 6010-SOS-93-002	Scale of A0: 1:200	Rev 3 Date Checked
Drawn: CJT	Checked: TR	Rev 4 Date Checked
	Date: 22-08-2016	Rev 5 Date Checked