

Contents	
1	Introduction
2	Bus services
6	Adoptions
7	Meetings
7	Planning Applications
8	Other Information
8	Upcoming events

Introduction

First of all, sorry I can't be with you again, I've had a last minute work meeting put in which I'm having to take at the same time as the GPNA meeting this evening.

It's been a busy few weeks across the Great Park with a number of issues popping up that have required attention. We've seen some good forward progress on certain issues and frustrating delays in others which I'll go into more detail on later.

Your local Liberal Democrat Councillors have been hard at work around the Park this month. Although we didn't hold our normal monthly surgery because of the General Election happening on the same day, we've been active in the community. This month I have conducted a walk around of Greenside to check-up on reported work that needed to be done, went out to the Morrison's steps following the earlier incident to take photos to send on to the Council, been to review the state of bins following residents concerns and have spoken with a number of residents across the park.

As ever, if any residents have concerns we're always happy to help where we can. I can be reached on 07368 229387 or thom.campion@newcastle.gov.uk

SCNE Services to NGP from September 2024
- X47 Extension from Kingston Park Rd



X47: To Eldon Square via Kingston Park & Cowgate

The proposed timetables are:

Newcastle City Centre - Regent Centre - Newcastle Great Park																49				
MONDAY TO FRIDAY																				
Eldon Square Bus Stn, Stand J	Sch	-	-	-	-	-	0905	1005	1105	1205	1305	1405	-	Sch	-	-	-	-	1705	1810
Gosforth High Street	-	-	-	-	-	-	0915	1015	1115	1215	1315	1415	-	-	-	-	-	-	1715	1820
Regent Centre Metro	0713	0726	0739	0752	0805	-	0918	1018	1118	1218	1318	1418	1448	1503	1521	1539	1557	1618	1718	1823
Great Park, Esh Plaza	0725	0738	0751	0804	0817	-	0930	1030	1130	1230	1330	1430	1500	1515	1533	1551	1609	1630	1730	1835
Great Park Village Centre, Wagonway Drive	0728	0741	0754	0807	0820	-	0933	1033	1133	1233	1333	1433	1503	1518	1536	1554	1612	1633	1733	1838
Regent Centre Metro	0748	0801	0814	0827	0840	-	0945	1045	1145	1245	1345	1445	1515	1530	1548	1606	1624	1645	1745	1850
Gosforth High Street	-	-	-	-	0843	-	0948	1048	1148	1248	1348	-	-	-	-	-	1627	-	1748	-
Eldon Square Bus Station	-	-	-	-	0853	-	0958	1058	1158	1258	1358	-	-	-	-	-	1637	-	1758	-
SATURDAY																				
Eldon Square Bus Stn, Stand J	-	-	-	-	0905	1005	1105	1205	1305	1405	1505	1605	1705	1810						
Gosforth High Street	-	-	-	-	0915	1015	1115	1215	1315	1415	1515	1615	1715	1820						
Regent Centre Metro	0718	0748	0818	0918	1018	1118	1218	1318	1418	1518	1618	1718	1823							
Great Park, Esh Plaza	0730	0800	0830	0930	1030	1130	1230	1330	1430	1530	1630	1730	1835							
Great Park Village Centre, Wagonway Drive	0733	0803	0833	0933	1033	1133	1233	1333	1433	1533	1633	1733	1838							
Regent Centre Metro	0745	0815	0845	0945	1045	1145	1245	1345	1445	1545	1645	1745	1850							
Gosforth High Street	-	-	-	0848	0948	1048	1148	1248	1348	1448	1548	1648	1748	-						
Eldon Square Bus Station	-	-	-	0856	0956	1056	1156	1256	1356	1456	1556	1656	1756	-						

NO SUNDAY OR BANK HOLIDAY SERVICE ON ROUTE 49

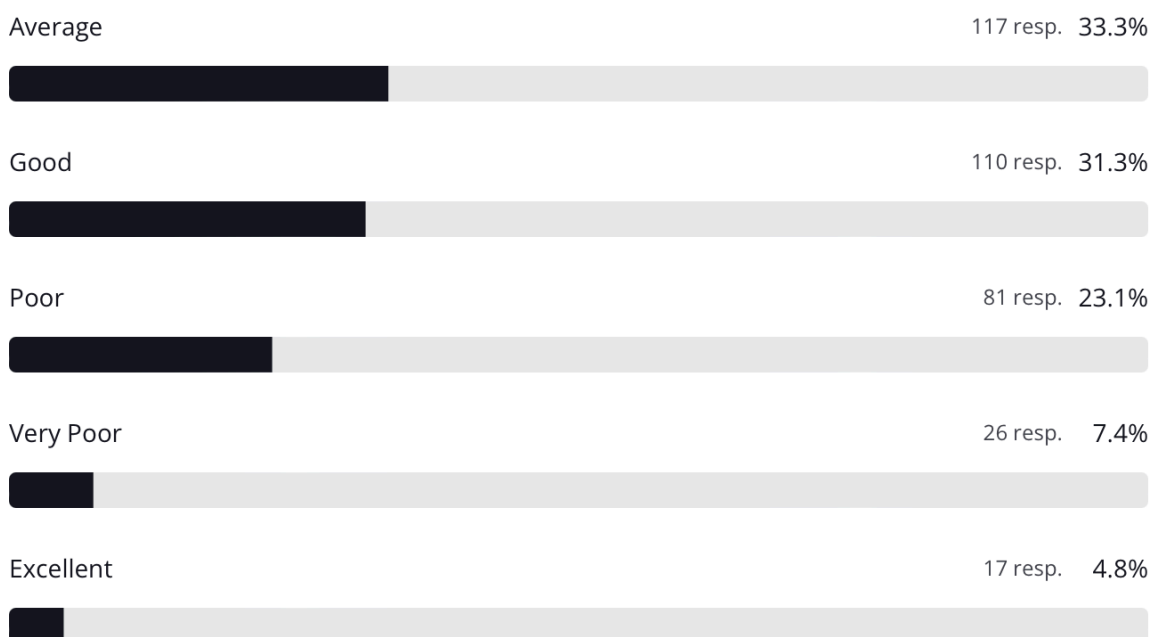
Sch - Schooldays only

Following the news of the proposed bus changes, your Liberal Democrat Councillors have held meetings with NCC, NGP, Nexus and GNE to pass on residents' concerns. We also launched a bus service to get feedback from residents on the Great Park about their views on public transport. The full breakdown of results can be found here -

<https://zrdy7zn0acb.typeform.com/report/YEKHfkvs/X8QJ6i0P0bw05DJ7> but the headline info is as follows:

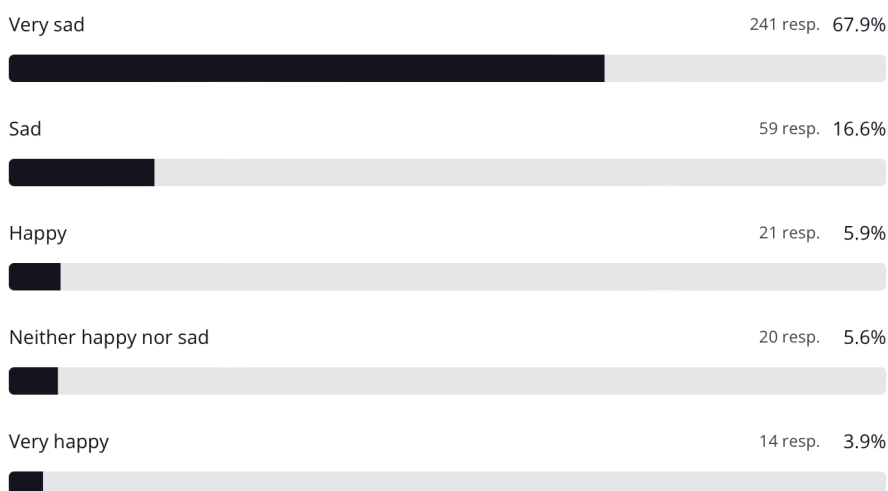
How would you rate the current bus services in our area?

351 out of 356 answered



operating anymore. How do you feel about these proposed changes?

355 out of 356 answered



Would these changes make you more or less likely to travel by bus?

350 out of 356 answered

	1	2	3	4	5
Q3 Express Service	8.9%	1.1%	7.1%	8%	74.9%
Regent Centre shuttle	28.1%	8.6%	27.2%	9.3%	26.9%
Kingston Park Metro...	34.8%	11.8%	17.9%	11.2%	24.2%
£6 unlimited day...	40.2%	12.2%	32.2%	6.4%	9%
A park and ride bus	47.5%	12.1%	21.6%	6.2%	12.5%
A park and ride Metro	42.8%	12.2%	23.7%	7.2%	14.1%

The survey clearly shows what we have consistently said to NCC, NGP, GNE and Nexus - the main thing residents want is a return to the Q3 route that we had pre-Covid.

I have reached out to Huw Lewis (head of Customer Service at Nexus) and Toby Hughes (Director of Transport North East) to register our frustration at the lack of consultation and to ask that they step in to help resolve the ongoing issues around public transport in NGP.

Adoption

On Friday July 26th, Cllr Robin Ashby and I met with David Abercrombie from Taylor Wimpey to discuss adoption. He spoke mainly about Melbury as this is waiting on final checks from NCC.

For the Great Park west of the A1, the plan is still to adopt the various sections of the spine road first and then move on to the residential cells. The proposed order is Greenside, East Moor and Elmwood as the immediate priorities. I am still waiting for NGP to share a finalised timetable of planned adoptions with us but I have been promised this again.

I will continue to raise adoption at my monthly meetings with the Consortium.

Meetings

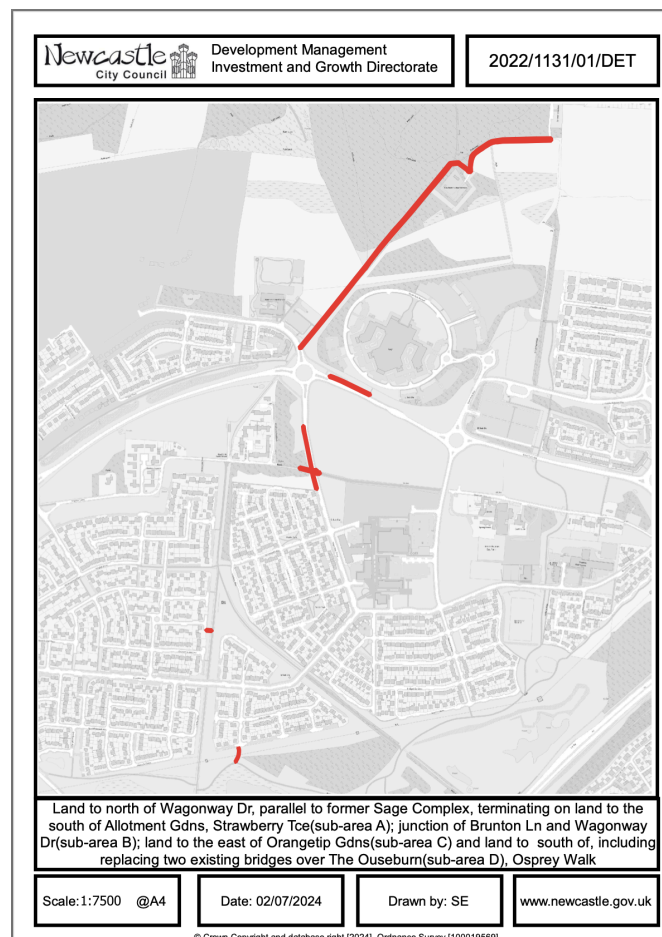
In the month of July I have had the following meetings with regard to Newcastle Great Park:

- Newcastle Great Park Consortium: adoption, public transport, safety issues, road crossings, pavement topping and bins
- Newcastle Great Park Management Company: safety issues, road crossings, pavement topping and bins
- Newcastle City Council Head of Planning: safety issues, road crossings, the bridge by Greenside, adoption, Great Park Academy
- Newcastle City Council Head of Transport: public transport, adoption
- Nexus: public transport
- TNE: public transport
- Nexus: public transport

Planning applications

The following application was supposed to go to NCC planning committee for decision but the meeting was sadly cancelled:

<https://democracy.newcastle.gov.uk/documents/s202029/p612julyjc%20Strategic%20Route%20-%20LW.pdf> this proposed changes to the following areas for strategic routes:



Other information

The Local Government Boundary Commission for England (LGBCE) released their first proposals for the new electoral boundaries in Newcastle. For the Great Park they have proposed maintaining the name 'Castle' but redrawing the boundaries so that it would only be Great Park - to the West of the A1 - with Brunswick and Hazelrigg. For the Great Park to the East of the A1 it would remain part of the Parklands ward.

I have also been working to address on-street parking around the community centre and Morrisons after residents raised concerns about this. This has been a long running issue and has greatly impacted residents living on Roseden Way

Since the unfortunate incident by Great Park Morrisons, I have spoken with both NCC and NGP about what can be done to address this issue.

I have been working with Havannah school and NGP following incidents at school drop-off and pick-up time.

Upcoming events

Gosforth Harriers summer relay:



2024 Summer Relays

Gosforth Harriers Invites you to the
Gosforth Summer Relays 2024

Date Sunday, 4th August 2024

Distances Junior 1 Mile Races and Senior 3 x 2 Mile Relays
Location Great Park, Newcastle upon Tyne
Start times 9:45am- 11:00am

Event 1: U11s & U13s Boys/Girls	Event 2: U15s Boys/Girls	Event 3: Seniors and Vets Men/Women
1 Mile Race	1 Mile Race	3 x 2 Mile Relay
9:45 am	10:15am	11:00am
Cost: £4 per Runner	Cost: £4 per Runner	Cost: £18 per Team

Online Entries to Open : <https://gosforthharriers.com/2024-summer-relays>

@gosforthharriers @Gosforth_HandAC gosforthharriers1@gmail.com

Bus consultation event:



View this email in your browser

THE LATEST NEWS FROM ACROSS THE PARK

NEWCASTLE GREAT PARKLIFE

Bus Engagement Event
Tuesday 30th July 2pm - 6pm